



Product Service

# CERTIFICATE

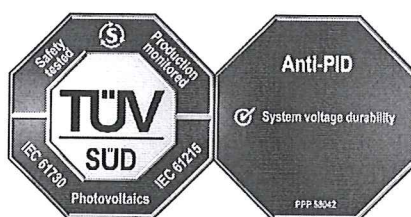
No. Z2 16 12 87544 005

**Holder of Certificate:** Tesla Industries (Pvt) Ltd.

PLOT NO. 81-G, STREET NO. 6, SECTOR I-10/3  
44000 ISLAMABAD  
PAKISTAN



**Certification Mark:**



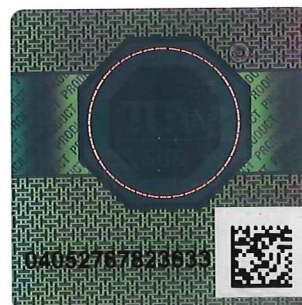
**Product:**

Crystalline Silicon Terrestrial Photovoltaic (PV) Modules  
(Mono & Poly crystalline Silicon Photovoltaic (PV) Module)

The product was tested on a voluntary basis and complies with the essential requirements. The certification mark shown above can be affixed on the product. It is not permitted to alter the certification mark in any way. In addition the certification holder must not transfer the certificate to third parties. See also notes overleaf.

**Test report no.:** 64290150019002A

**Valid until:** 2021-12-07



**Date,** 2016-12-23

Page 1 of 3

*Harry Shubo Zhang*  
(Harry Shubo Zhang)



Product Service

**CERTIFICATE**  
**No. Z2 16 12 87544 005**

**Model(s):**  
**TSPM-6U(72)-xxxW (xxx=240-345, in steps of 5);**  
**TSPM-6U(60)-xxxW (xxx=200-285, in steps of 5);**  
**TSPM-6U(54)-xxxW (xxx=180-260, in steps of 5);**  
**TSPP-6U(72)-xxxW (xxx=240-340, in steps of 5);**  
**TSPP-6U(60)-xxxW (xxx=200-280, in steps of 5);**  
**TSPP-6U(54)-xxxW (xxx=180-255, in steps of 5)**

**Parameters:**

Rated output power at STC:	See page 3
Application class:	Class A
Max. system voltage:	1000 V d.c.
Construction:	Framed, with Junction box, Cable and Connectors
PID test condition:	± 1000 V d.c., 96 h, 85% RH, 85 °C

**Tested according to:**

IEC 61215(ed.2)  
 IEC 61730-1(ed.1);am1;am2  
 IEC 61730-2(ed.1);am1  
 PPP 58042B:2015

**Production Facility(ies):** 85088

Page 2 of 3



Product Service

# CERTIFICATE

No. Z2 16 12 87544 005

Model	Rated output power at STC
TSPM-6U(72)-xxxW (xxx=240-345, in steps of 5)	240 W, 245 W, 250 W, 255 W, 260 W, 265 W, 270 W, 275 W, 280 W, 285 W, 290 W, 295 W, 300 W, 305 W, 310 W, 315 W, 320 W, 325 W, 330 W, 335 W, 340 W, 345 W
TSPM-6U(60)-xxxW (xxx=200-285, in steps of 5)	200 W, 205 W, 210 W, 215 W, 220 W, 225 W, 230 W, 235 W, 240 W, 245 W, 250 W, 255 W, 260 W, 265 W, 270 W, 275 W, 280 W, 285 W
TSPM-6U(54)-xxxW (xxx=180-260, in steps of 5)	180 W, 185 W, 190 W, 195 W, 200 W, 205 W, 210 W, 215 W, 220 W, 225 W, 230 W, 235 W, 240 W, 245 W, 250 W, 255 W, 260 W
TSPP-6U(72)-xxxW (xxx=240-340, in steps of 5)	240 W, 245 W, 250 W, 255 W, 260 W, 265 W, 270 W, 275 W, 280 W, 285 W, 290 W, 295 W, 300 W, 305 W, 310 W, 315 W, 320 W, 325 W, 330 W, 335 W, 340 W
TSPP-6U(60)-xxxW (xxx=200-280, in steps of 5)	200 W, 205 W, 210 W, 215 W, 220 W, 225 W, 230 W, 235 W, 240 W, 245 W, 250 W, 255 W, 260 W, 265 W, 270 W, 275 W, 280 W
TSPP-6U(54)-xxxW (xxx=180-255, in steps of 5)	180 W, 185 W, 190 W, 195 W, 200 W, 205 W, 210 W, 215 W, 220 W, 225 W, 230 W, 235 W, 240 W, 245 W, 250 W, 255 W

Test report no.: 64290150019002A

Date, 2016-12-23

Page 3 of 3